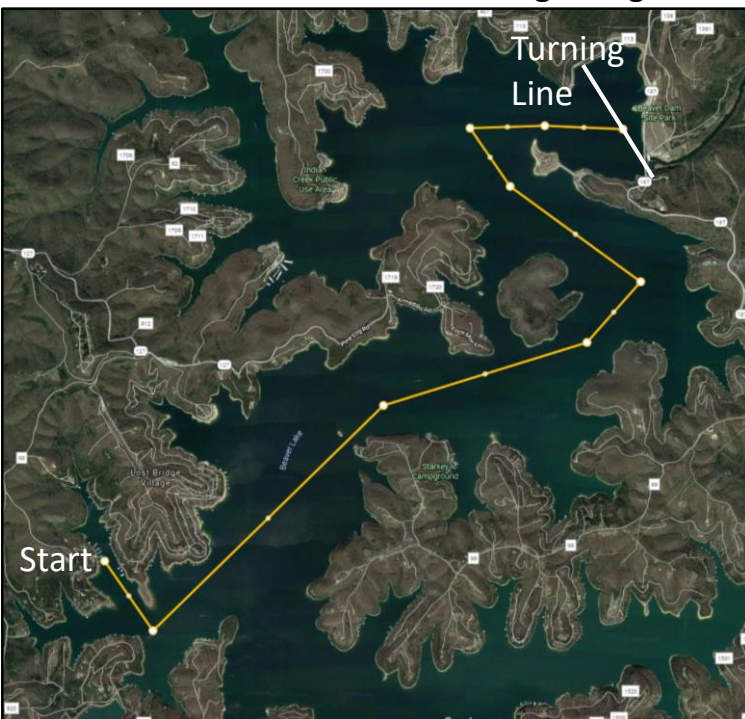


# The Dam Race

- Summary: A year round race from BLSC to the Dam and back again
- Approx. Length: 12 nautical miles by rhumb line
- Start/Finish Line: A line from the corner of dock 5 to the no wake buoy
- Turning Mark: A range line taken where the flagpole on the dam lines up with the tan building on the south bluff behind it.
- Time Limits: none
- Winners: Fastest time, Slowest time; no PHRF corrections
- Reporting: Record of your passage must be submitted to the Race Committee before the beginning of the End of Year Christmas Party.



## Special Rules:

- 1) No motoring, except within "no wake" areas of marinas.
- 2) Time at anchor, dock, or mooring counts towards the race time.

