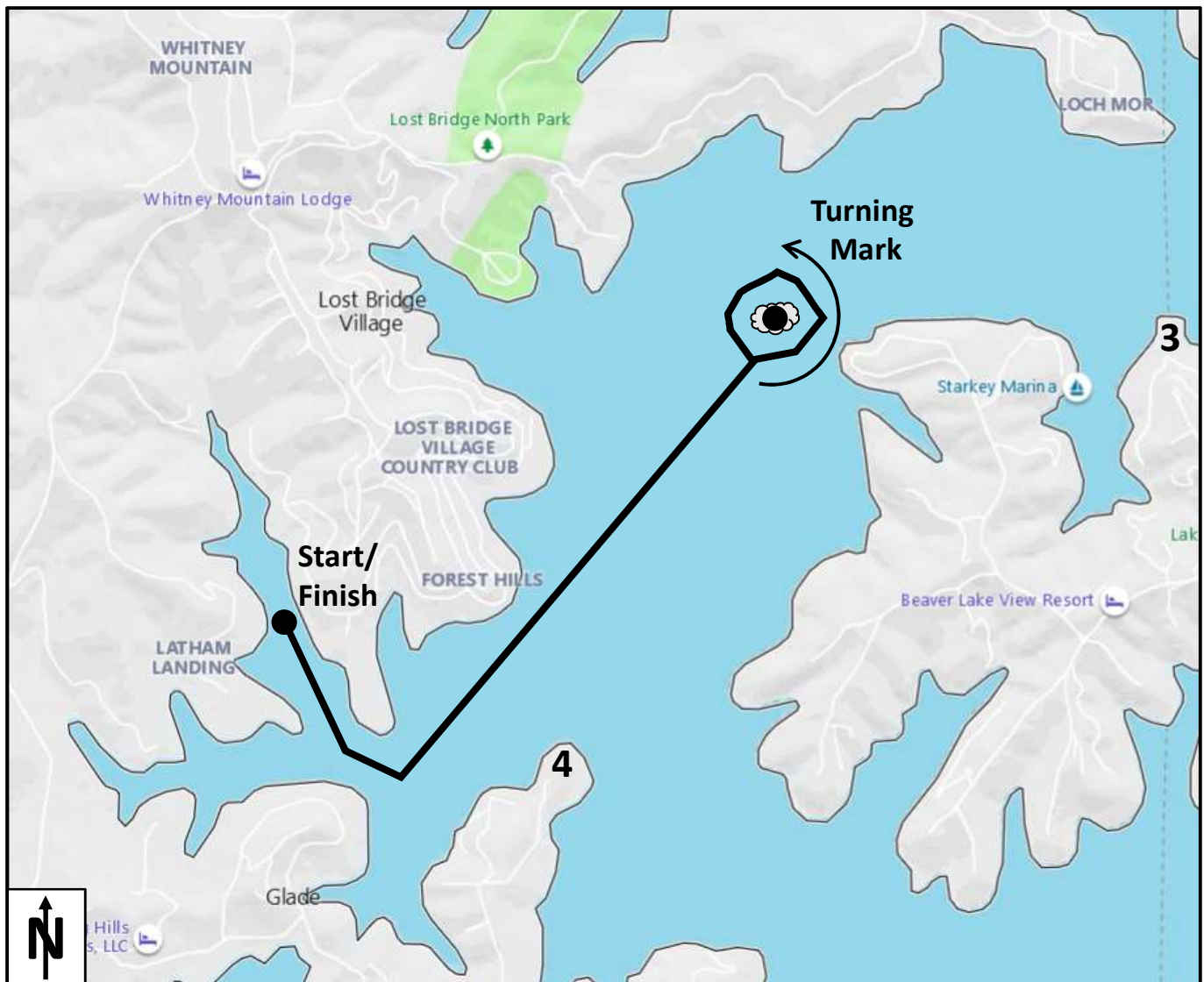


# Pursuit Race Course

## Starkey Island

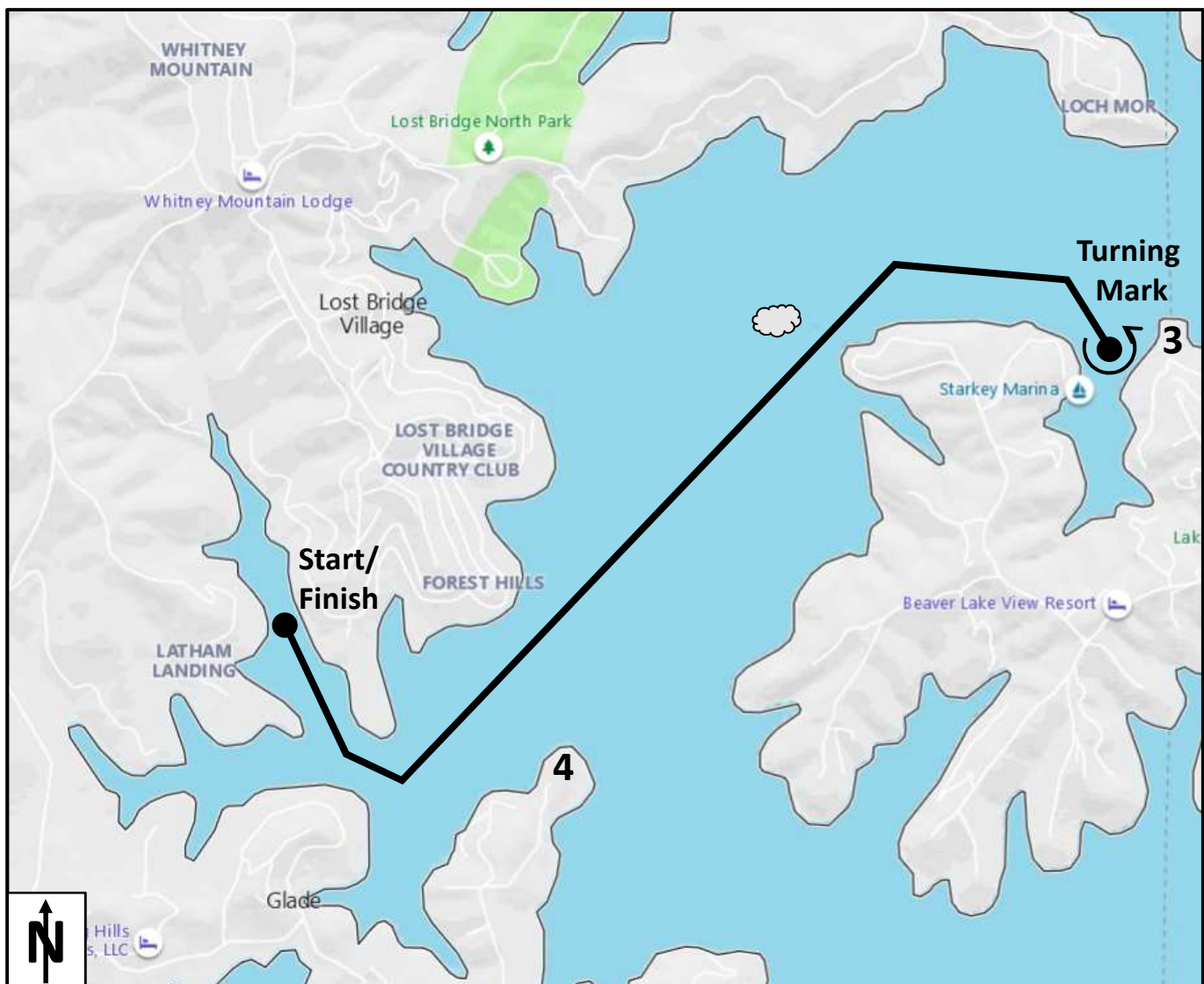
- Summary: A pursuit race from BLSC to Starkey Island and back again
- Approx. Length: 4.5 nautical miles by rhumb line
- Start/Finish Line: A line from the corner of dock 5 to the no wake buoy
- Turning Mark: Starkey Island  
Port Rounding (Keep island to port side of boat)
- Starting Sequence: Staggered start times based on PHRF ratings
- Winner: First across the Finish Line (Line Honors)
- Rules: See Racing Instructions and Notice of Race



# Pursuit Race Course

## Starkey Marina

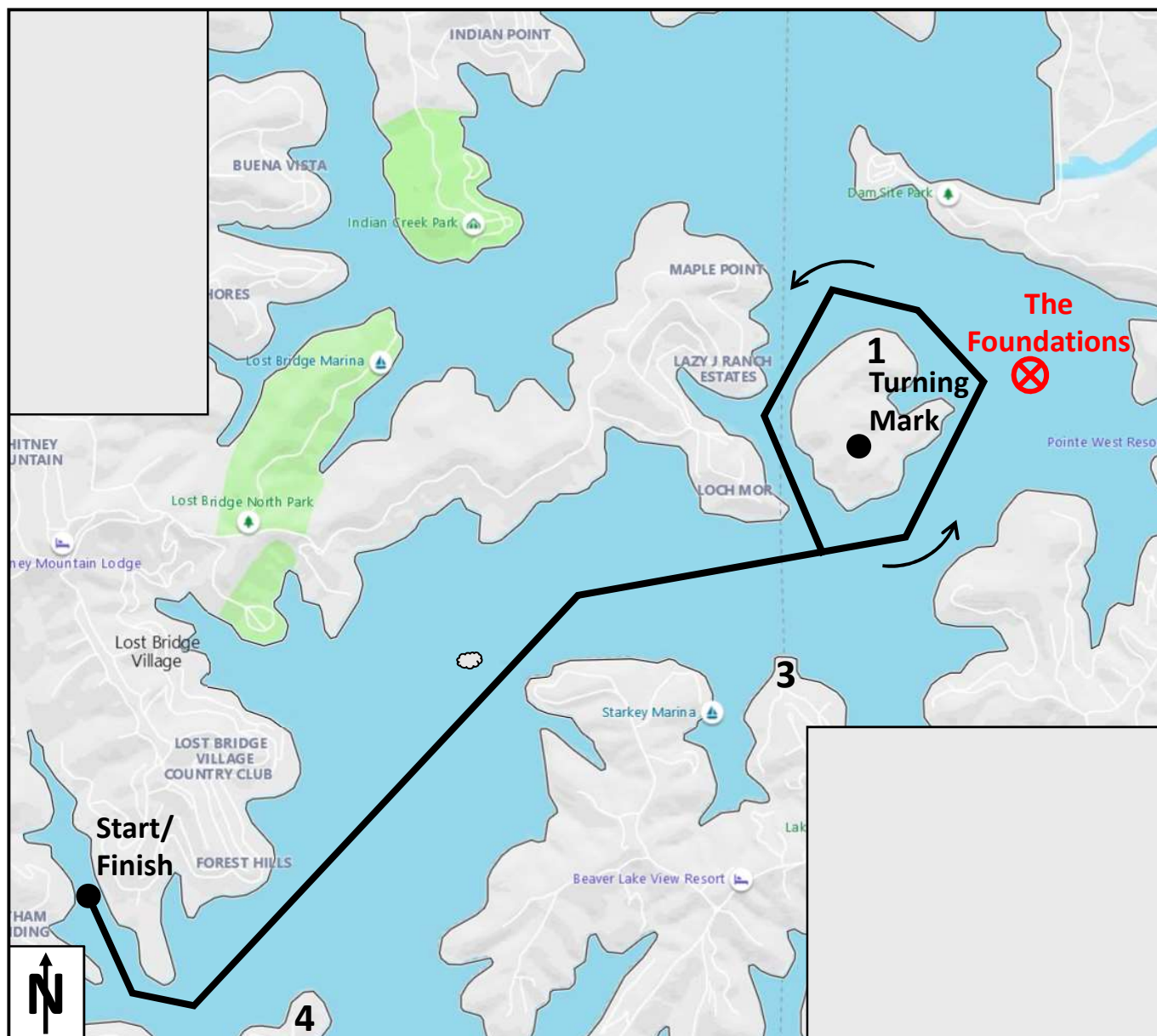
- Summary: A pursuit race from BLSC to Starkey Marina and back again
- Approx. Length: 6.5 nautical miles by rhumb line
- Start/Finish Line: A line from the corner of dock 5 to the no wake buoy
- Turning Mark: The centermost no wake buoy at the entrance to Starkey Marina  
Port Rounding (Keep buoy to port side of boat)
- Starting Sequence: Staggered start times based on PHRF ratings
- Winner: First across the Finish Line (Line Honors)
- Rules: See Racing Instructions and Notice of Race



# Pursuit Race Course

## Dam Site Island

- Summary: A pursuit race from BLSC to Lost Bridge North Marina and back again
- Approx. Length: 8.2 nautical miles by rhumb line
- Start/Finish Line: A line from the corner of dock 5 to the no wake buoy
- Turning Mark: Dam Site Island  
Port Rounding (Keep buoy to port side of boat)
- Starting Sequence: Staggered start times based on PHRF ratings
- Winner: First across the Finish Line (Line Honors)
- Rules: See Racing Instructions and Notice of Race

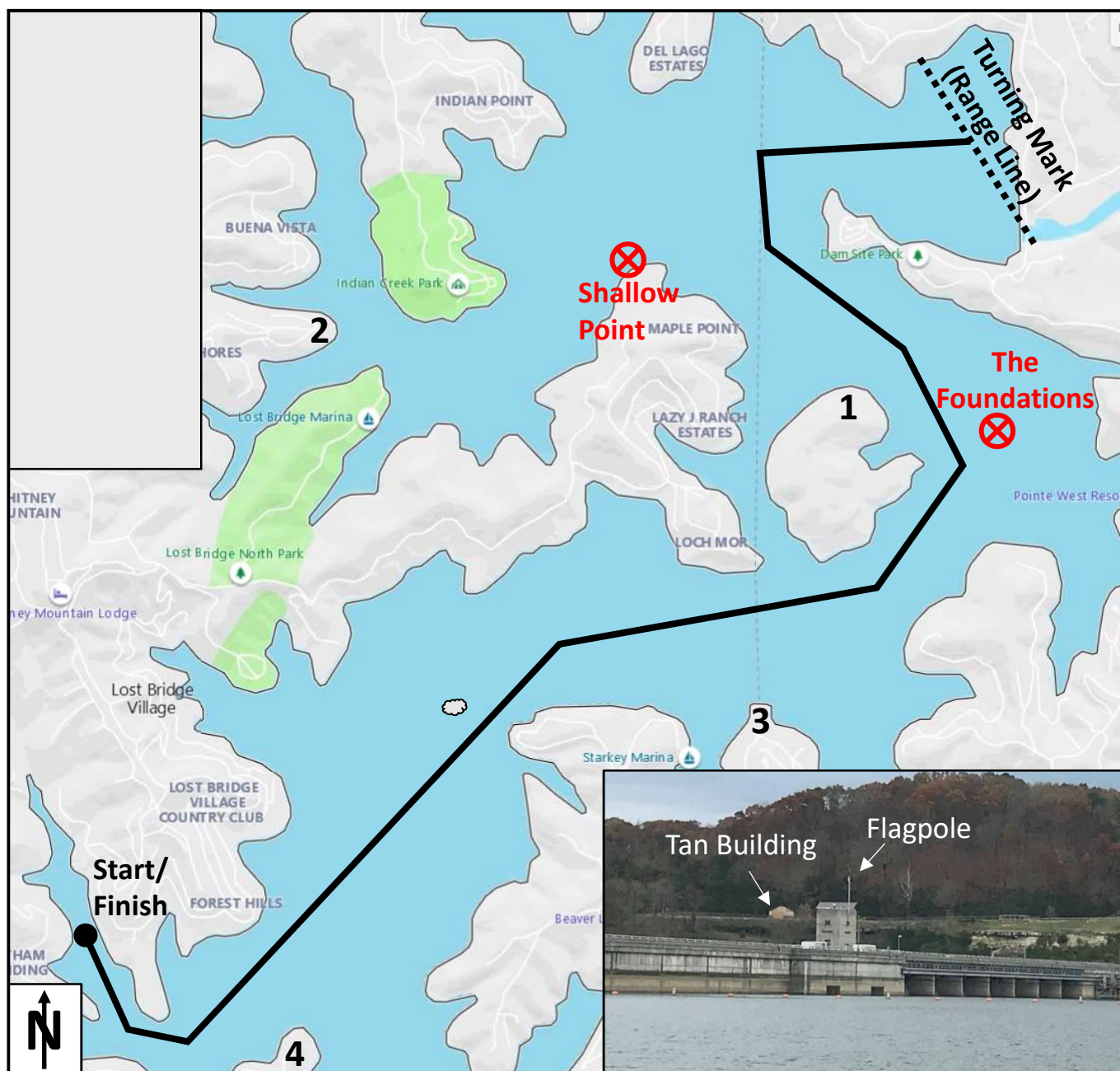




# Pursuit Race Course

## The Dam

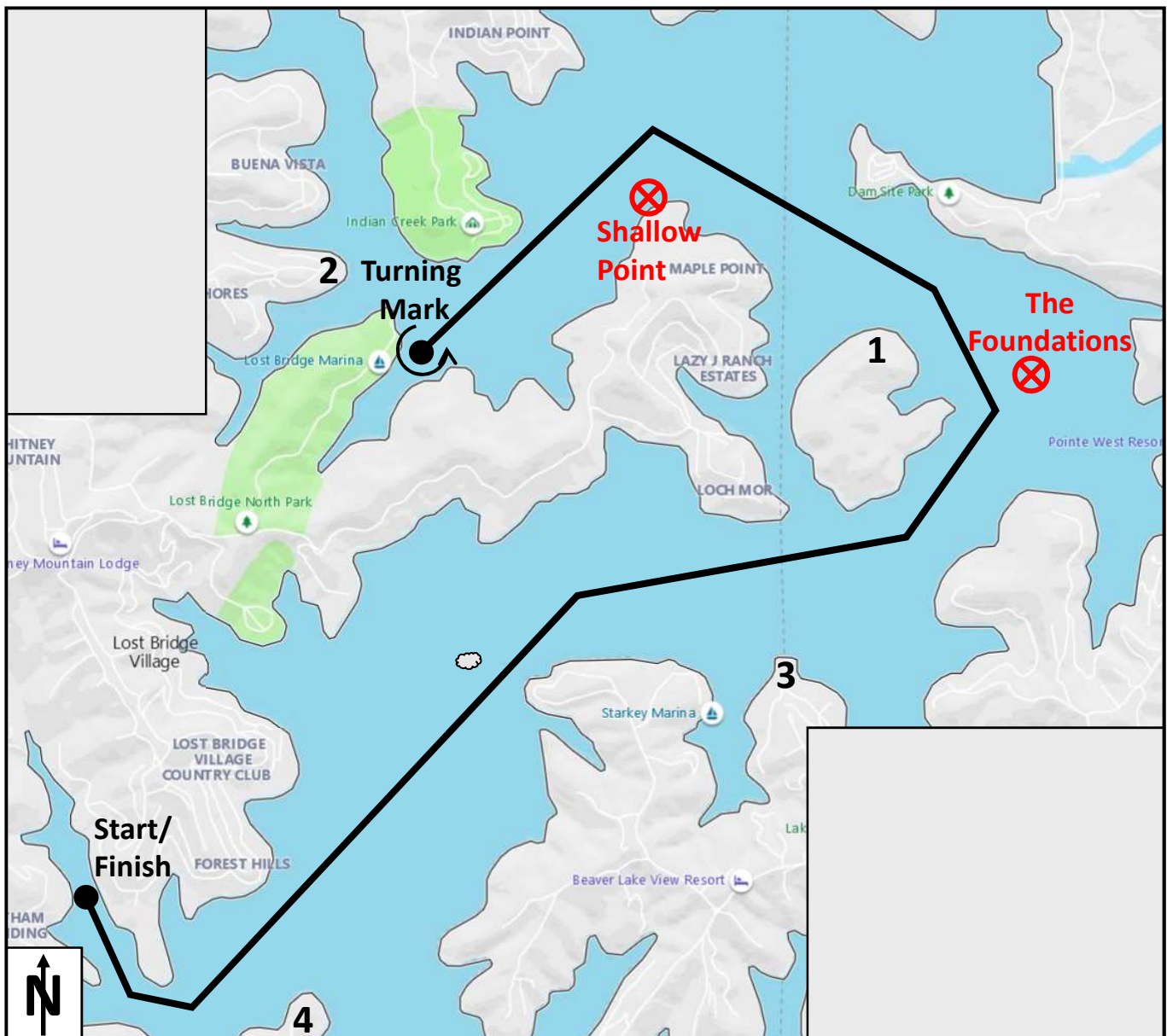
Summary:	A pursuit race from BLSC to the Dam and back again
Approx. Length:	12 nautical miles by rhumb line
Start/Finish Line:	A line from the corner of dock 5 to the no wake buoy
Turning Mark:	A range line taken where the flagpole on the dam lines up with the tan building on the south bluff behind it.
Starting Sequence:	Staggered start times based on PHRF ratings
Winner:	First across the Finish Line (Line Honors)
Rules:	See Racing Instructions and Notice of Race A boat must cross the range line with any part of her hull, or crew or equipment in normal position



# Pursuit Race Course

## Lost Bridge North Marina

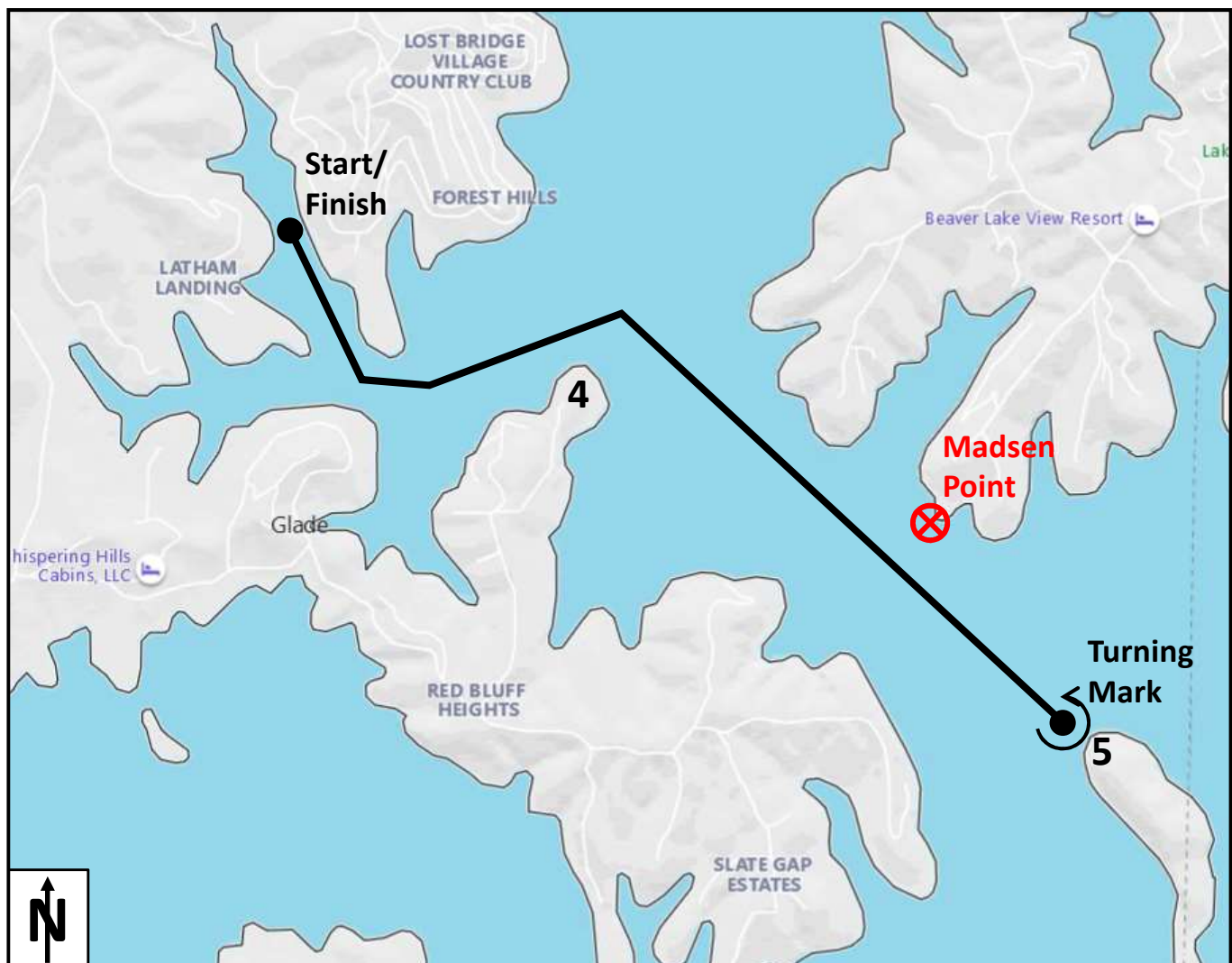
- Summary: A pursuit race from BLSC to Lost Bridge North Marina and back again
- Approx. Length: 13.5 nautical miles by rhumb line
- Start/Finish Line: A line from the corner of dock 5 to the no wake buoy
- Turning Mark: The big, fixed, can buoy at the entrance to Lost Bridge North Marina  
Port Rounding (Keep buoy to port side of boat)
- Starting Sequence: Staggered start times based on PHRF ratings
- Winner: First across the Finish Line (Line Honors)
- Rules: See Racing Instructions and Notice of Race



# Pursuit Race Course

## Point 5

- Summary: A pursuit race from BLSC to Point 5 and back again
- Approx. Length: 5.6 nautical miles by rhumb line
- Start/Finish Line: A line from the corner of dock 5 to the no wake buoy
- Turning Mark: A Racing Buoy dropped near Point 5,  
If No Buoy, be within 100 yards of the Point 5 sign  
Port Rounding (Keep buoy to port side of boat)
- Starting Sequence: Staggered start times based on PHRF ratings
- Winner: First across the Finish Line (Line Honors)
- Rules: See Racing Instructions and Notice of Race

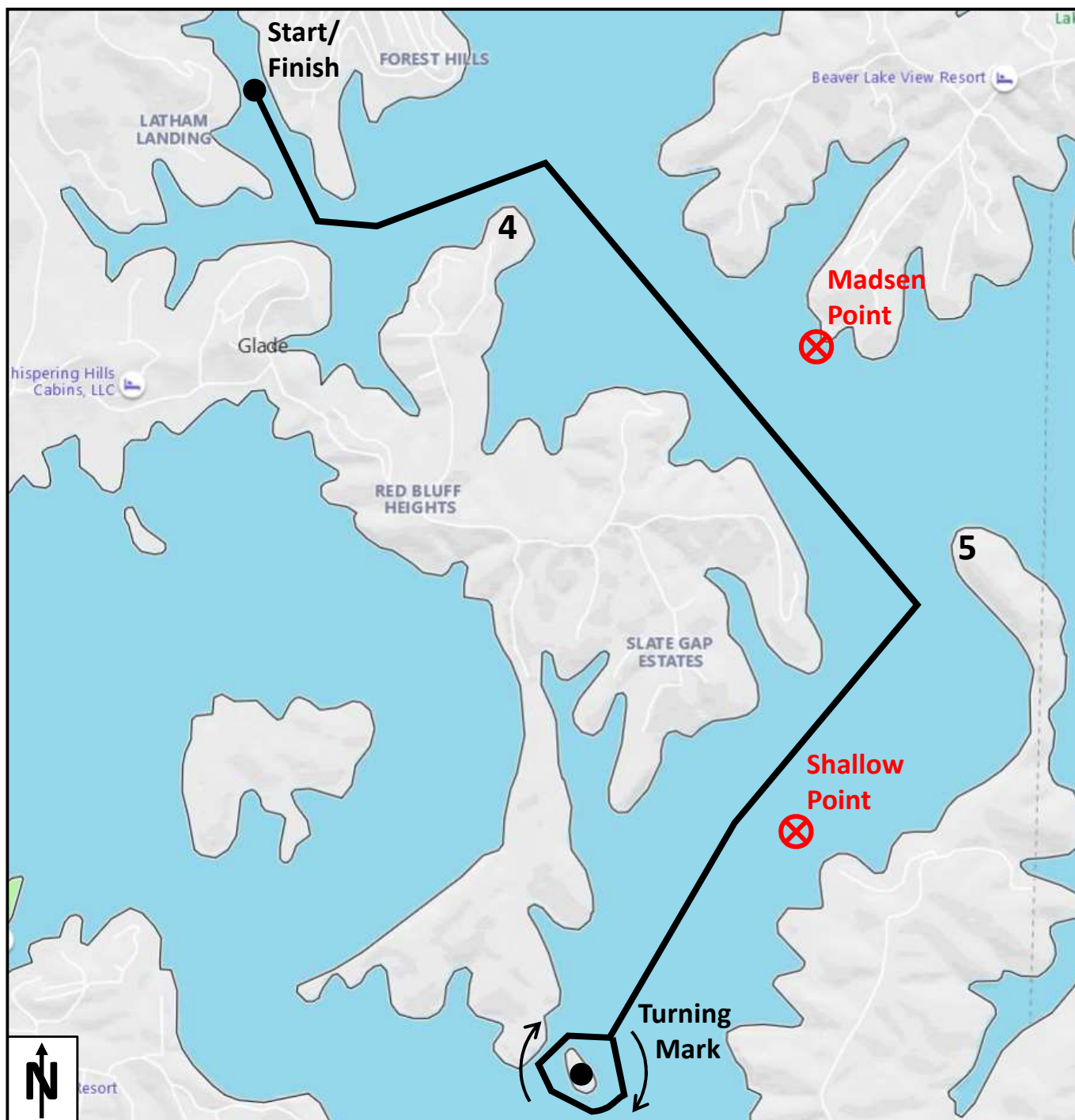




# Pursuit Race Course

## Slate Gap Island

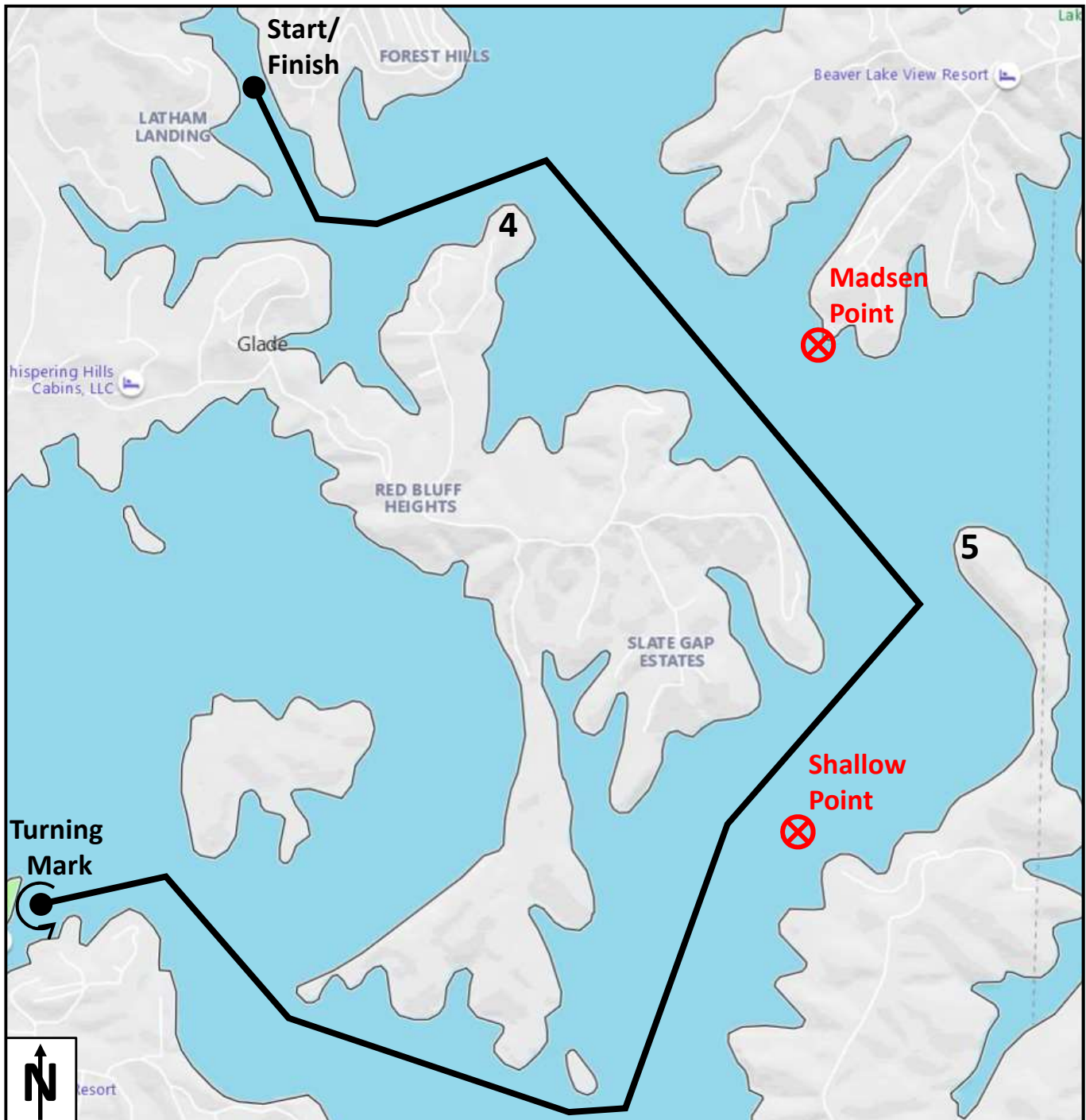
Summary:	A pursuit race from BLSC to Slate Gap Island and back again
Approx. Length:	9.5 nautical miles by rhumb line
Start/Finish Line:	A line from the corner of dock 5 to the no wake buoy
Turning Mark:	Slate Gap Island; <b>Starboard</b> Rounding (Keep island to starboard side of boat) unless otherwise declared
Starting Sequence:	Staggered start times based on PHRF ratings
Winner:	First across the Finish Line (Line Honors)
Rules:	See Racing Instructions and Notice of Race



# Pursuit Race Course

## Rocky Branch Marina

Summary:	A pursuit race from BLSC to Rocky Branch Marina and back again
Approx. Length:	13 nautical miles by rhumb line
Start/Finish Line:	A line from the corner of dock 5 to the no wake buoy
Turning Mark:	The centermost no wake buoy at the entrance to Rocky Branch Marina Port Rounding (Keep buoy to port side of boat)
Starting Sequence:	Staggered start times based on PHRF ratings
Winner:	First across the Finish Line (Line Honors)
Rules:	See Racing Instructions and Notice of Race

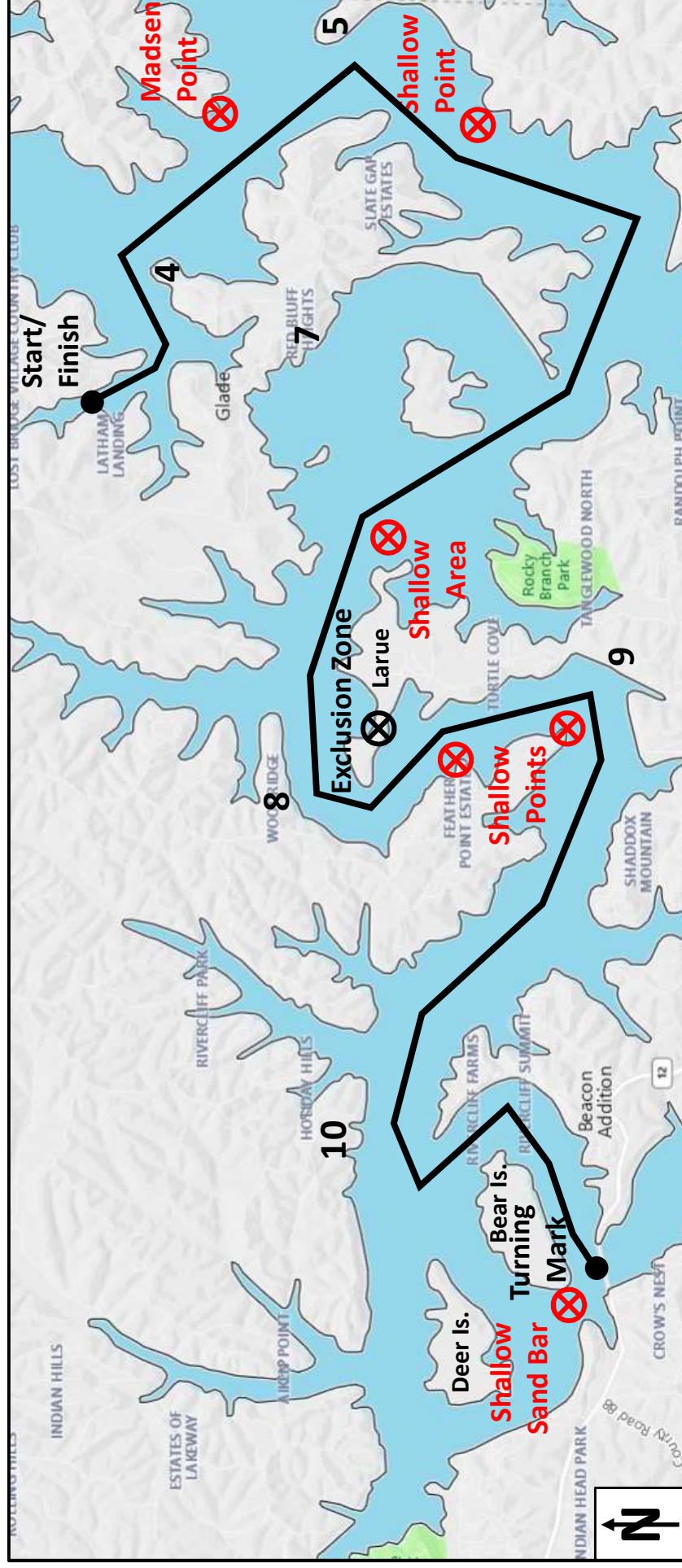




# Pursuit Race Course

## Highway 12 Bridge

- Summary:** A pursuit race from BLSC to Highway 12 Bridge and back again
- Approx. Length:** 29.5 nautical miles by rhumb line
- Start/Finish Line:** A line from the corner of dock 5 to the no wake buoy
- Turning Mark:** Be within 100 yards of the centermost buoy at the Highway 12 Bridge
- Port Rounding** (Keep buoy to port side of boat)
- Staggered start times** based on PHRF ratings
- Winner:** First across the Finish Line (Line Honors)
- Rules:** See Racing Instructions and Notice of Race
- Exclusion Zone:** the channel between Larue Island and Larue Peninsula



# Pursuit Race Course

## Prairie Creek Marina

- Summary: A pursuit race from BLSC to Prairie Creek Marina and back again
- Approx. Length: 30.5 nautical miles by rhumb line
- Start/Finish Line: A line from the corner of dock 5 to the no wake buoy
- Turning Mark: The centermost no wake buoy at the entrance to Prairie Creek Marina
- Port Rounding (Keep buoy to port side of boat)
- Staggered start times based on PHRF ratings
- Winner: First across the Finish Line (Line Honors)
- Rules: See Racing Instructions and Notice of Race
- Exclusion Zone: the channel between Larue Island and Larue Peninsula

